

Successful PCI for bifurcation lesion involving Abrupt Type CTO

ISEIKAI FUKUOKA GENERAL HOSPITAL

Yukeshi Serikawa

Shinji Tokutome, Tomoko Yoshikawa, Kou Takesue,
Masahiro Adachi, Yusuke Takahara, Kumpei Osaka,
Yoshiaki Moriya, Daisuke Nagatomo, Toshiyuki Kozai,
Masahiro Arimura, Masanori Okabe, Yusuke Yamamoto

Atouf, M

Patient History

MI with 3-vessel disease occurred.

Initial PCI for HLB.

sub-acute phase, PCI for RCA.

After three months, PCI for diagonal branch(unsuccessful)

After six month, proximal LAD was 75%

stenosis(progression) and diagonal branch of ostium was total occlusion.

We tried to perform PCI to LAD and diagonal branch of CT lesion.

Coronary risk factor

Pre



POST



could not pass the GW.



Total Occlusion of DB

Anteroposterior (AP) view of a coronary angiogram showing total occlusion of the Diagonal Branch (DB).

Oblique view of a coronary angiogram showing total occlusion of the Diagonal Branch (DB).



6.5F radial approach
Corsair support
Wizard 78
ABYSS intermediate

T0 lesion was abrupt type.

Unperforated wire supported micro catheter could not

What do you do with the next step?

using more strong support

select up-grade wire

#other plan

We selected multifunction catheter



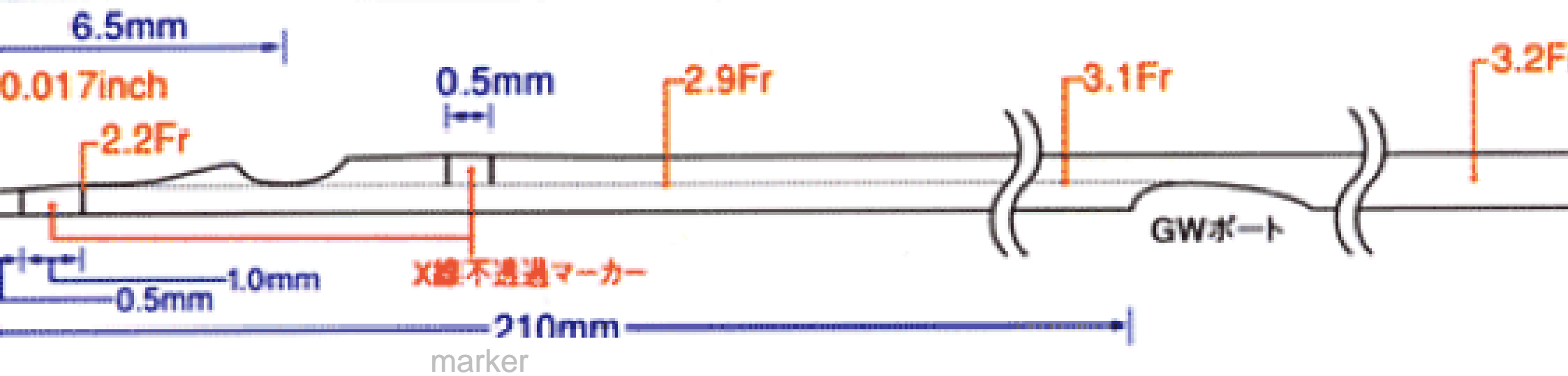
6.5F radial approach

Crusade

Wizard 78

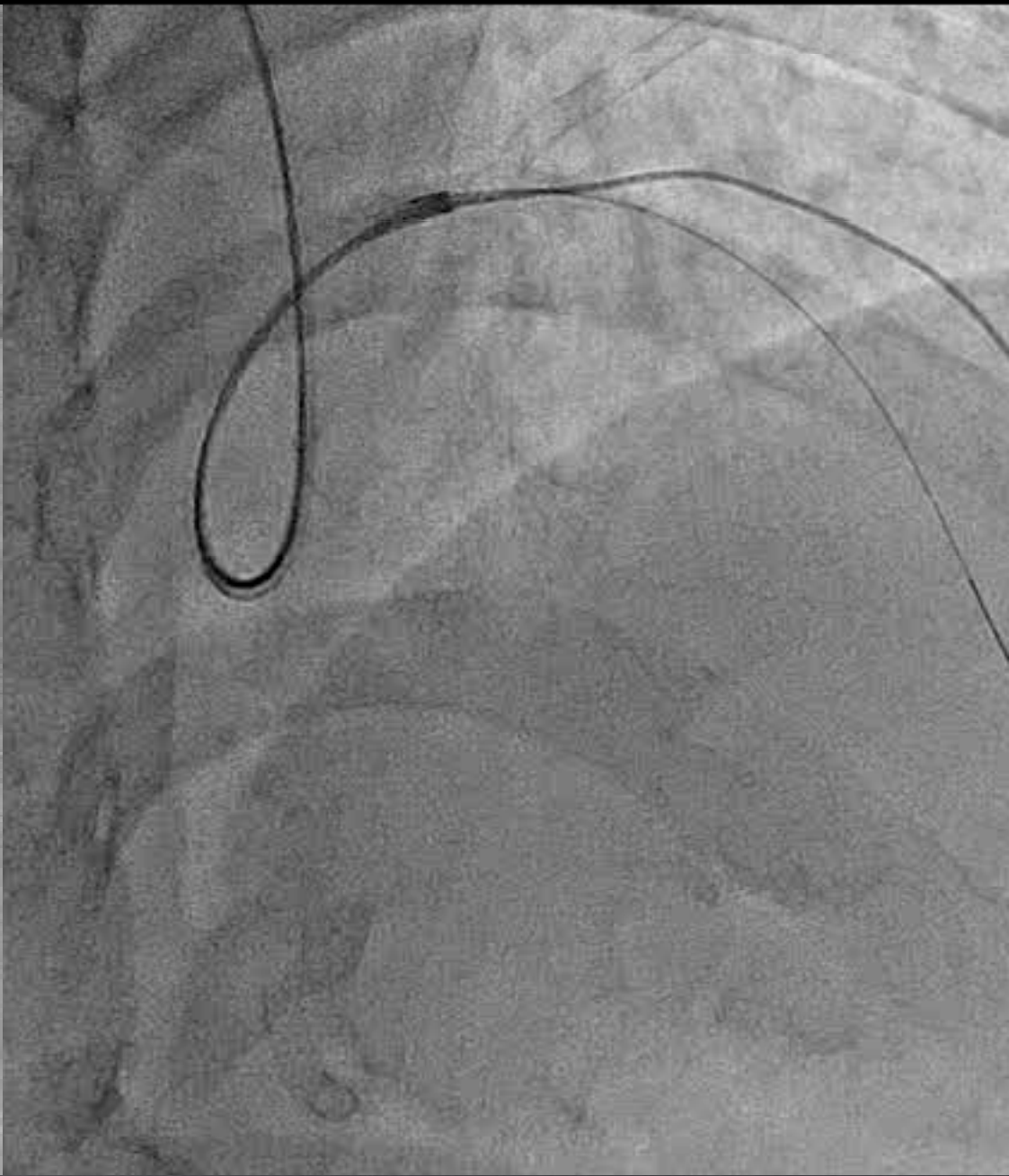
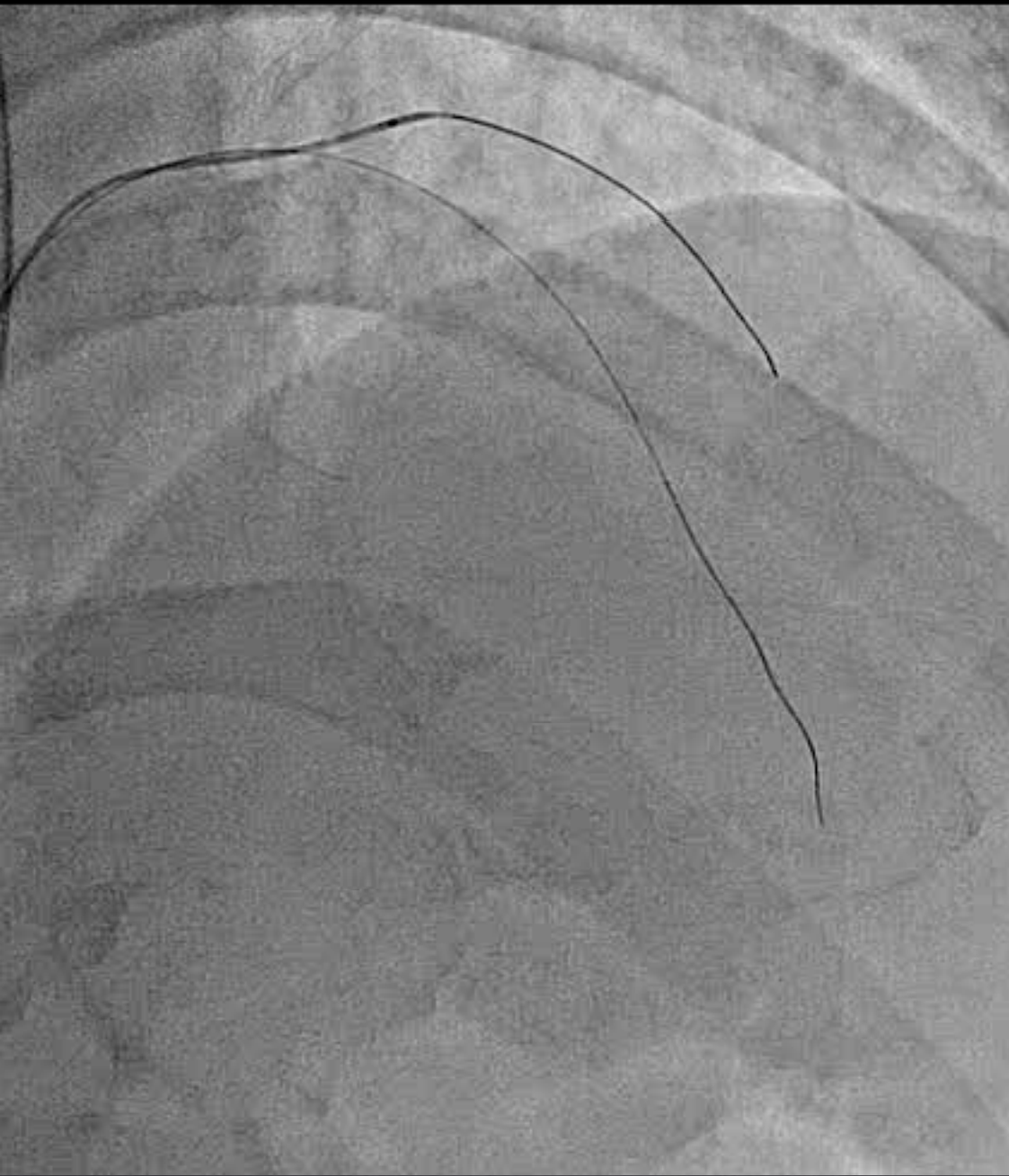
ABYSS intermediate

ABYSS intermediate could catch the diagonal branch



Keep the coaxiality
good support
easy manipulation



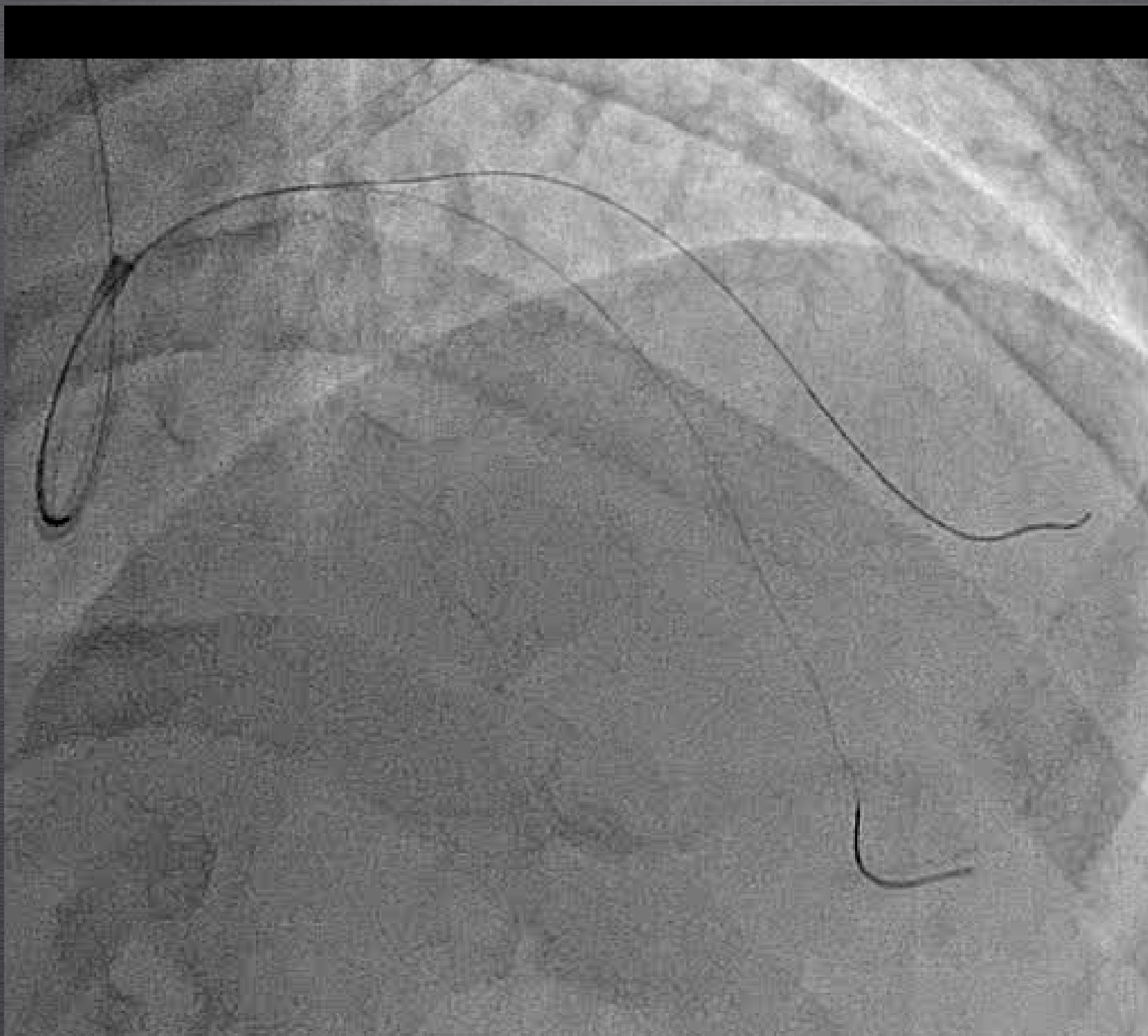


**s intermediate could penetrate diagonal branch
yehanged from crusade to corsair using trapping tech**



Yess intermediate wire put on pseudo rumen.
selected **step down wire**(Wizard78).

POST-OCDA

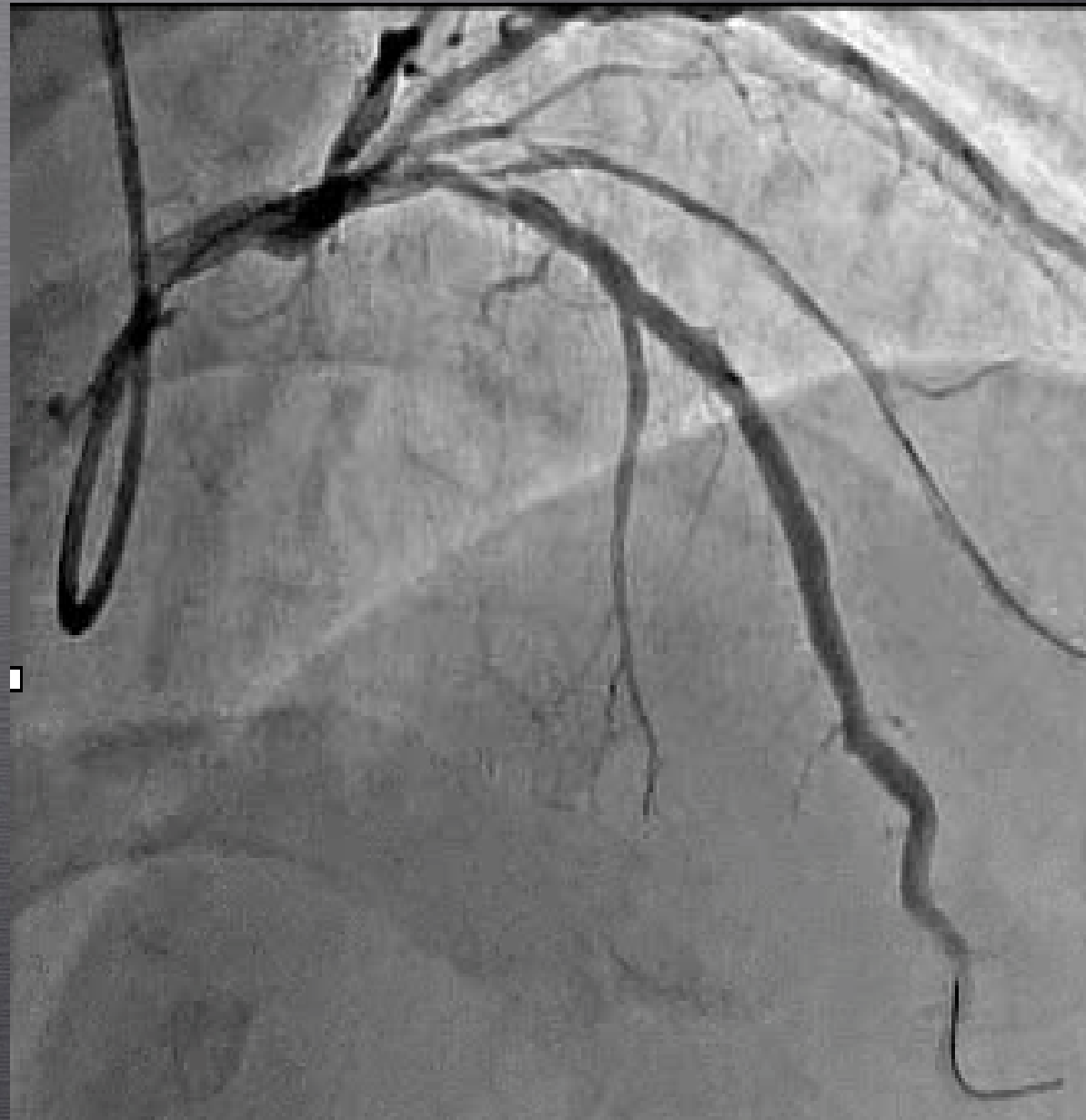


single stent with KBT

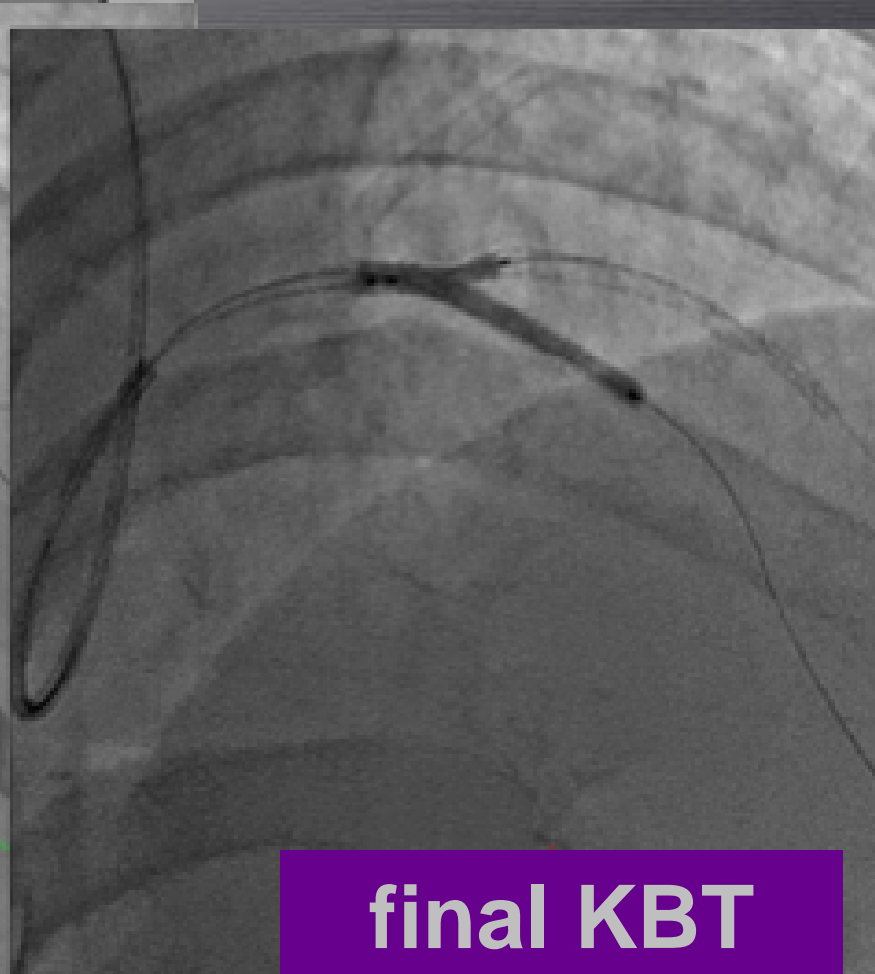
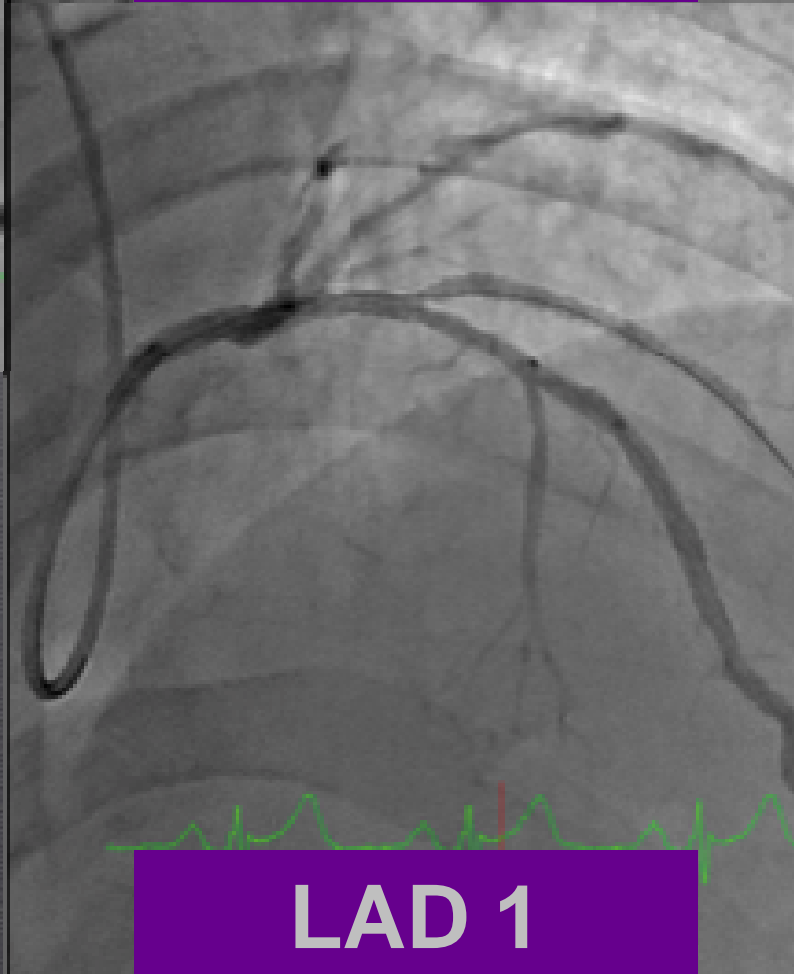
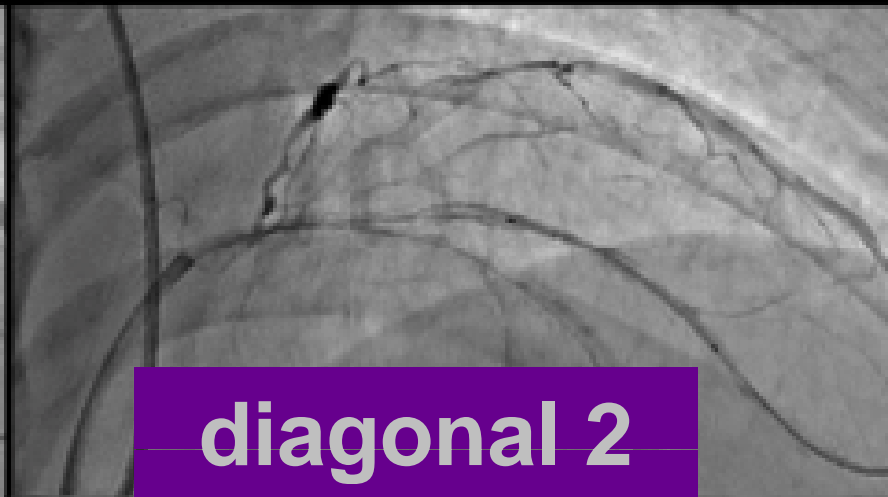
ulottes stent

mini crash(modified T)

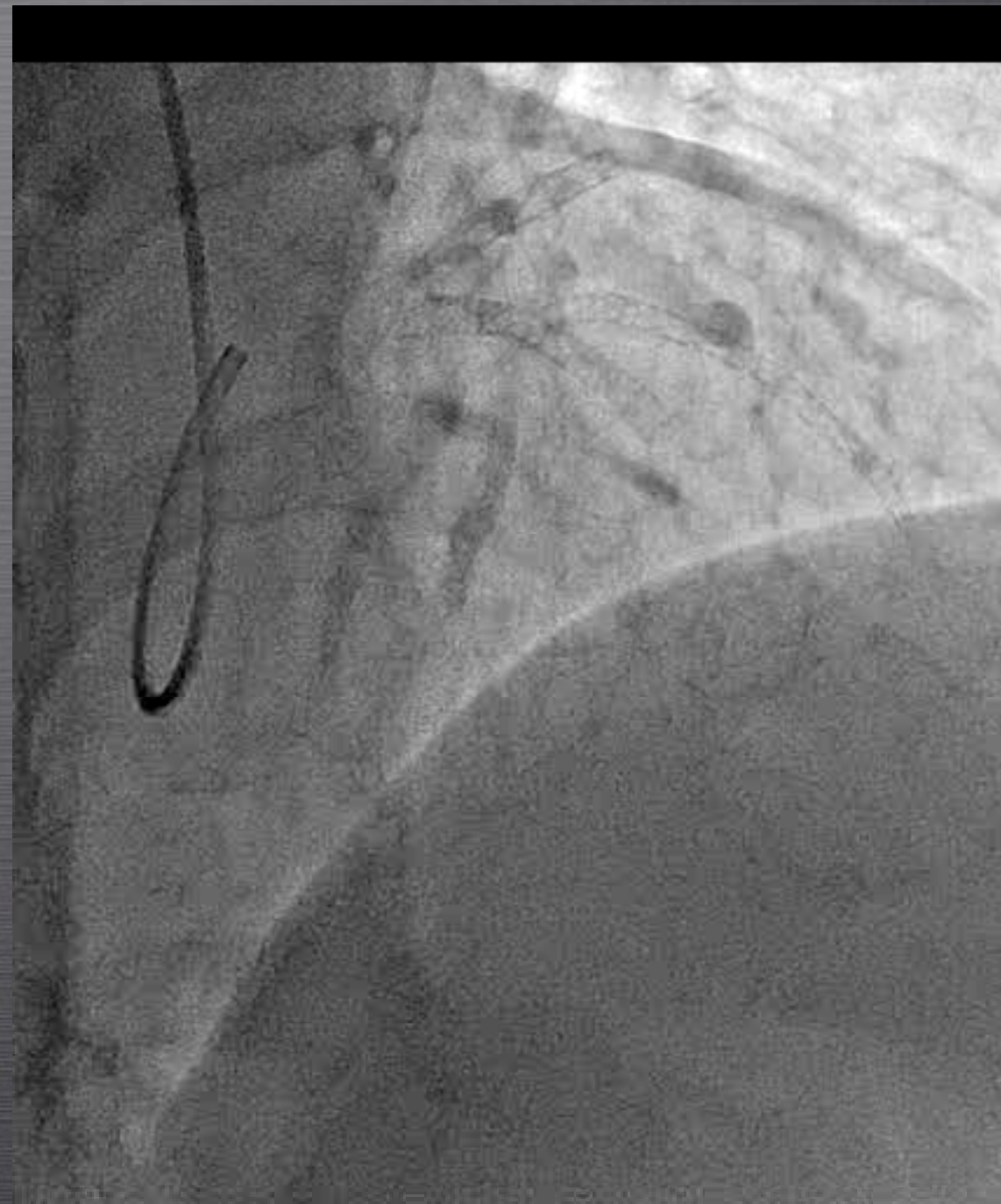
other plan



W... 1... 10... 1... 11... 1...



Final Angiography



Final

Multifunction catheter is useful device
rupt type CTO with bifurcation lesion.

step down parallel wire technique is tip
s situation.

We selected **culottes stent technique**
cause of low angle bifurcation and bro
a of diagonal branch.

Take Home message

In bifurcation lesion and abrupt type CTO, coaxiality and good support device is necessary.

Multifunction catheter is suitable in the situation.